

American Standard

AMARILIS

THREE-HANDLE BATH/SHOWER FITTING

MODEL NUMBER:

- 3630.000 Bath/Shower Fitting
I.P.S. spout. Less handles.

Handles must be ordered separately.



Handles must be ordered separately.

GENERAL DESCRIPTION:

Cast brass valve body on 8 inch centers. Amarilis 1/4 turn washerless ceramic disc valve cartridges - reversible for use with either lever or round handles. 1/2" female NPT inlets/outlets. Easy clean 4-1/2" diameter "Rain" showerhead with 2.5gpm/9.5L/min. flow restrictor. Cast brass shower arm. Brass tub spout. Third handle provides positive diverting action between showerhead and tub spout.

PRODUCT FEATURES:

Brass Construction: Durable. Ideal for prolonged contact with water. Provides the finest surface for application of finishes.

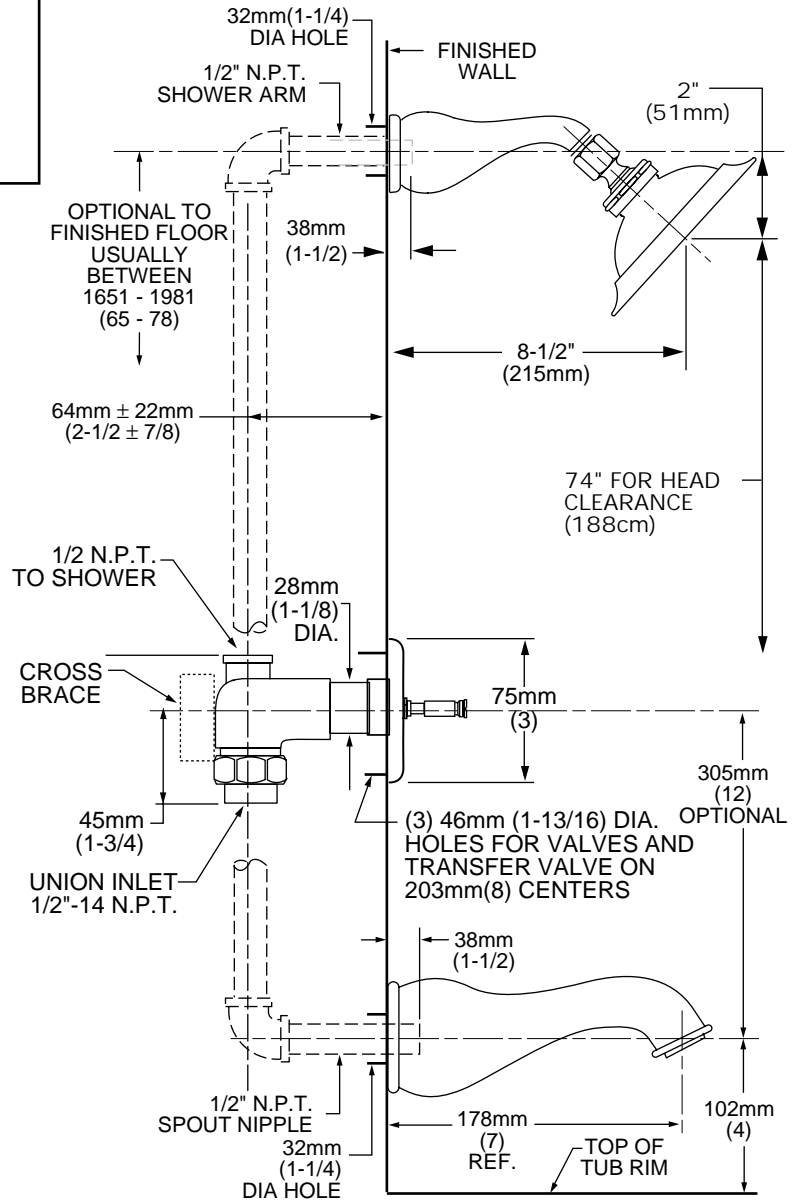
Ceramic Disc Valve Cartridges: Assures a lifetime of drip-free performance.

Increased roughing-in: 42mm to 86mm (1-5/8 to 3-3/8).

Exclusive Fixation Plate Design: Provides water-tight seal around valves, even against pliable, uneven walls. Wall escutcheon snaps easily into place.

Wide Selection of Styles and Configurations: Full range of interchangeable handle styles.

Choice of Finishes: Wide range of durable finishes.



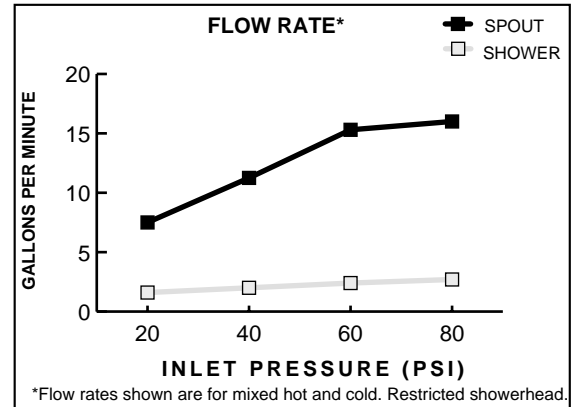
SUGGESTED SPECIFICATION:

Three handle bath/shower fitting shall feature cast brass construction. Shall also feature 1/4 turn washerless ceramic disc valve cartridges that are reversible for use with round or lever handles. Fitting shall be American Standard Model # 3630.000.____ and handle kit # 0000.____.

CODES AND STANDARDS

These products meet or exceed the following codes and standards:

ASME A112.18.1M
CSA B 125



Product Number	Description	Finish Options								
		Polished Chrome	Polished Nickel	PVD B Nickel w/ Brass Mixage	PVD Blackened Bronze	PVD Polished Brass	PVD Satin w/ Chrome Mixage	PVD Satin	PVD Satin w/ Brass Mixage	PChrome w/ PVD Brass Mixage
		002	008	062	068	099	221	295	297	299
3630.000	Bath/Shower. I.P.S. spout. Less handles.									

Handles must be ordered separately.

To order **Less Handles** - Specify: 4 digit style number followed by three zeros and 3 digit finish number.
Example 3630.000.099 = Bath/Shower Fitting in Polished Brass finish.

The above fittings will accept the following Amarilis-Series handles.*

453	443	463	433	553	543	573	373H	353H	343H	313H	903 913	863	853	873	893

*See Section N for additional information on handle kits.

Meets the American Disabilities Act Guidelines and **ANSI A117.1** Requirements for the physically challenged.